



## ENVI300: Tailored for Commercial Excellence

Crafted specifically for commercial applications, ENVI300 offers versatile solutions with carbon filter refills and ion exchange cartridges. It excels in removing contaminants and reducing scale, making it a cost-effective choice for the food service industry.

Available in two forms:

- Carbon Filter Refills: These carbon-based refills are designed to eliminate chlorine taste, odours, and offensive contaminants, delivering impeccable water quality.
- Ion Exchange Resin Cartridge: Ideal for hot or boiling water applications, ENVI300 prevents scale build up, safeguarding dispensing equipment and lowering maintenance costs.

- ✓ Commercial-grade performance.
- ✓ Chlorine and odour removal.
- ✓ Prevents scale build up.



ENVI300 is specifically developed for use in commercial applications and is available Carbon filter refills or replaceable cartridge containing ion exchange resin.

## Benefits and Applications

### Carbon filter refills

The ENVI300 range of carbon based refills are designed to remove and reduce chlorine taste and odour and other offensive contaminants, such as: chloramine, lead, herbicides, micropollutants, pharmaceutical and pesticides for great tasting drinking water. Slowphos® media versions available to control scale.

A lead reduction carbon block can be used if required.

### Ion exchange resin cartridge

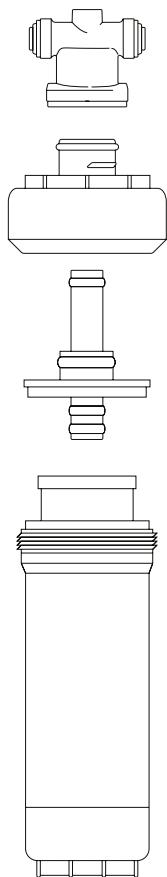
ENVI300 is particularly suited for Hot or Boiling water applications where there is a need to prevent scale build up thereby reducing servicing costs. The carbon block reduces chlorine levels and improves taste and odour of the water.

- Boiling water tanks
- Coffee Machines

## Certification

ENVI300 Filter housing is certified to NSF standard 42 for microbiological safety and structural integrity:

- Burst pressure of 400 psi
- Hydrostatic to 375 psi for 15 mins
- Cycle testing from 0 - 150 psi 100,000 times



## Specifications

### Housing Construction

FDA approved polypropylene with 10% talc

### Capacity

Depending on choice -Carbon 13,125 Litres to 67,000 Litres

### Operating Temperature range

4°C – 40°C / 39°F - 104°F

### Flow Rate

Max. 9.45 lpm

### Dimensions

309mm H X 125 W

### Media type

Carbon or Ion Exchange resin based

### Max Operating Pressure

8.5 Bar / 120 psi

### Water inflow temperature range

4°C – 40°C / 39°F - 104°F

### Micron Rating

Depending on Media– Range from 0.2 to 5 micron

### Mounting orientation

Vertical

#### **NOTES:**

Performance capacity depends on system design, mains pressure and flow rate, incoming water parameters and certain other application conditions.

After installation, flush the cartridge for 30 seconds to remove fines before using the water and again after a period of no usage. Estimated capacity using 2 ppm free available chlorine at 0.5 ppm breakthrough.

#### **WARNING:**

Only use with potable water.

Do not use with water that is of unknown quality without adequate disinfection before or after the system

Product Code	System Type
ENVI30014	enviro+ 300 System + 1/4" PF Head (with scale removal insert)
ENVI30038V	enviro+ 300 System + 3/8" PF Head (with scale removal insert)

Product Code	Media Type	Sediment	Chlorine Reduction	Lead Reduction
22000427	Carbon Block (5m)	✓	✓	✗
22012595	Carbon Block with Phos (5m)	✓	✓	✗
22000560	Fibrethane Block (0.5m)	✓	✓	✓
22000561	Fibrethane Block with Phos (0.5m)	✓	✓	✓
22000547P	Resin/Carbon Riser (1m)	✓	✓	✗

Product Code	Media Type	Cyst Reduction	Anti-Microbial Resistance	Scale Protection
22000427	Carbon Block (5m)	✗	✗	✗
22012595	Carbon Block with Phos (5m)	✗	✗	✓
22000560	Fibrethane Block (0.5m)	✓	✓	✗
22000561	Fibrethane Block with Phos (0.5m)	✓	✓	✓
22000547P	Resin/Carbon Riser (1m)	✓	✗	✓

m = micron rating