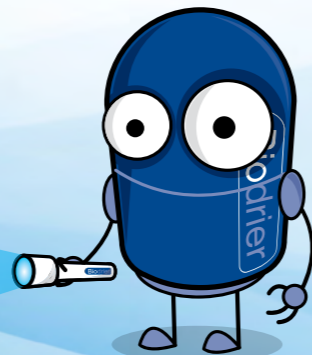


# Biodrier BioLite



## Powerful Energy Saving

The Biodrier BioLite was chosen independently by the Department of Energy and Climate Change and installed in their London offices for being the most cost effective and energy efficient way to dry your hands.

## Heater Control

The Biodrier BioLite gives you the option to have the heater element turned on or off. This is ideal for when the ambient air temperature is low and you want the comfort of warm air. When the heater is not needed, it can be switched off to save even more energy and money.

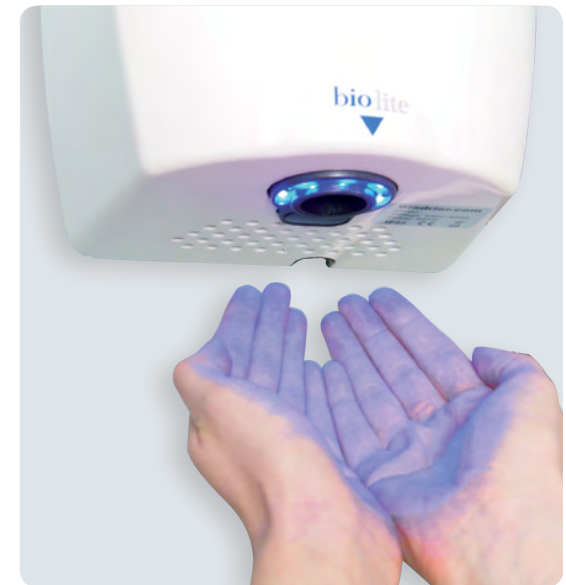
## Cool Design

When the BioLite is activated, Cool Blue LED lights guide the user to the airflow. The sleek modern design and compact size of this hand dryer make it ideal for most washrooms, especially those that have minimal space.



## Biodrier BioLite Technical Specifications

Item Category	Performance
Operating voltage	220-240Vac, 50 Hz
Air speed	64 m/s (140m <sup>3</sup> /h)
Motor type	650W adjustable brush type
Heater element	250W thermal protected
Rating power	650W (heater off) 900W (heater on)
Drying time	Under 10 seconds
Circuit operation	Infrared automatic, self adjusting
Timing protection	60 seconds auto shut off
Drip proof	IP22
Isolation	Class I
Net weight	4.5kg
Unit size	W 240 x H 268 x D 176mm
Finish	Die cast aluminium white/silver/chrome
Decibel rating	76 dba @ 1 mtr
Approvals	CE, WEEE, <b>GreenSpec®</b>



Tested, chosen & used by the **Department of Energy and Climate Change** for being the most cost effective and energy efficient hand dryer.



Department of Energy & Climate Change

## Colour Options



WHITE | BL09W



SILVER | BL09S



CHROME | BL09C