

Food Warming Drawers

Key Features

- Type: Electric
- Counter top unit
- Pre-set thermostat
- Water tray (removable)
- Two drawers (removable)
- Supplied with 2 x 1/1 GN containers (100mm deep) and perforated tray



Construction

- Body: stainless steel grade 430
- GN containers: stainless steel grade 304

Available Options

- N/A

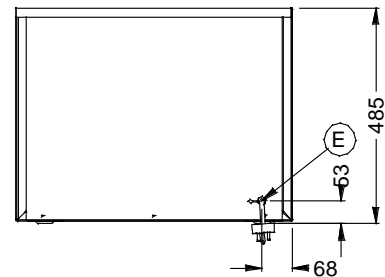
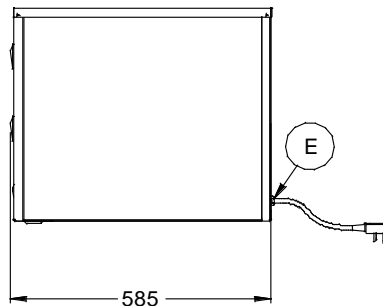
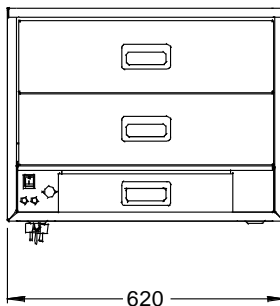
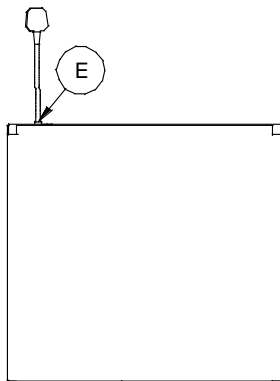
Available Accessories

- N/A

Specifications

Model	FWDG
External height (mm)	485
External width (mm)	620
External depth (mm)	585
Usable drawer capacity h x w x d (mm)	110 x 503 x 298
Net weight unpacked (kg)	47.5
Gross weight packed (kg)	52
Shipping volume (m ³)	0.639
Total power rating (kW)	1.5
Electrical supply 1N~+E 230V 50-60Hz Current Rating (A)	6.5

FWDG



Lincat Limited, Whisby Road,
Lincoln LN6 3QZ,
United Kingdom

UK Sales Tel: 01522 875500 UK Spares Tel: 01522 875510 UK General Tel: 01522 875555
 UK Fax: 01522 875530 International Sales Tel: +44 1522 503250 International Fax: +44 1522 875530
 Website: www.lincat.co.uk UK Sales e-mail: sales@lincat.co.uk International Sales e-mail: export@lincat.co.uk



Document ref:
FFOODWARMINGFWDG
Issue date: Feb-17